

Statement of Financial Position and Statement of Activities

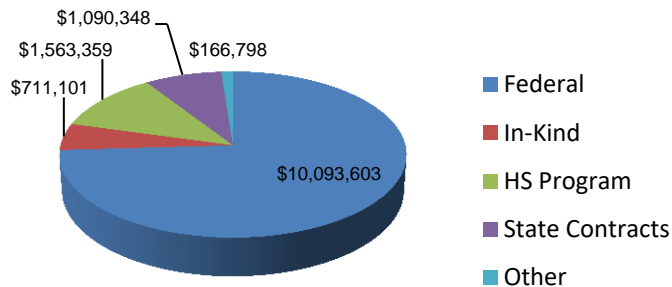
Statement of Financial Position as of June 30, 2018

Assets	2018
Cash & Deposits	\$880,012
Government Claims Receivable	406,300
Other Assets	82,251
Property and Equipment	3,755,691
Total Assets	\$5,124,254
Liabilities	
Accounts Payable	\$225,444
Accrued Expenses	483,432
Total Liabilities	\$708,876
Equity	\$4,415,378
Total Liabilities & Equity	\$5,124,254

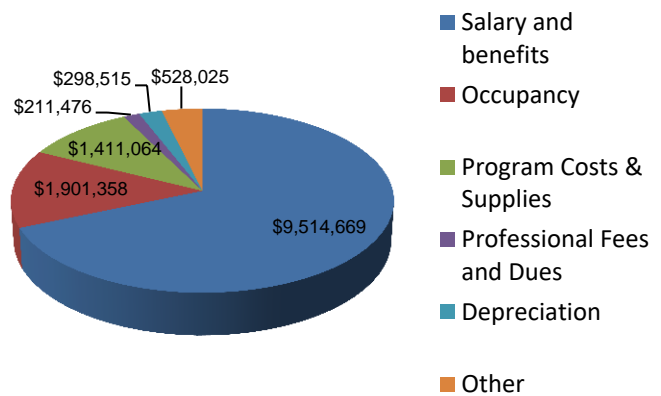
Statement of Activities as of June 30, 2018

Revenue	2018
Federal Contracts	\$10,093,603
In-Kind Non-Cash Contributions	711,101
Child and Adult Care Food Program	743,494
Office of Juvenile Affairs Contracts	688,286
Childcare Subsidy Funds & Co-Pays	561,274
State Appropriated Funds – Head Start	133,591
Oklahoma Early Childhood Program	125,000
SoonerCare Funds	133,176
Insure Oklahoma Healthcare	268,886
Municipal Revenue	50,000
Client Fees	57,905
Contributions	34,609
Other Revenues	24,284
Total Revenue	\$13,625,209
Expenses	
Program Services	\$12,557,283
Management and General	1,307,824
Total Expenses	\$13,865,107
Net Assets Beginning of Year	4,655,276
Net Assets End of Year	4,415,378
Change in Net Assets	\$(239,898)

FY 2018 Revenues



FY 2018 Expenses



Head Start Expenditures

PY 2018-2019

Expenses	
Salaries & Benefits	\$8,773,274
Occupancy	1,230,007
USDA Food Costs	709,539
Supplies	490,242
Training & Travel	283,080
Insurance Expense	112,787
Child Services	57,631
Printing & Publications	97,021
Professional Fees	103,596
Preplacement Screening	15,115
Miscellaneous	12,189
	\$11,884,481

In-Kind	
Volunteer Services	\$1,067,030
Facilities	637,325
Vendor Services	215,877
State Appropriated Funds	133,591
	\$2,053,823

Head Start Budget

PY 2019-2020

Revenues	
Department of Health and Human Services-ACF-Head Start	\$5,119,909
Department of Health and Human Services-ACF-Early Head Start	4,946,119
Childcare Subsidy	575,000
Child and Adult Care Food Program - CACFP	800,000
Oklahoma Early Childhood Program	250,000
Insure Oklahoma	336,000
Other Program Income	191,541
Total	\$12,218,569
Expenses	
Salaries and Fringe Benefits	\$ 9,783,993
Travel and Training	256,208
Occupancy	929,768
Children and Family Services Supplies	230,763
Food Supplies	715,000
Office Supplies and Postage	40,110
Printing & Publications	77,287
Child Services Consultants, Nutrition and Parent Services	94,241
Accounting and Audit	71,800
Miscellaneous (OSBI, Drug Screens, etc.)	19,399
Total	\$12,218,569

**Additional Non-Cash Head Start/Early Head Start Program Non-Federal Share, \$1,520,572.